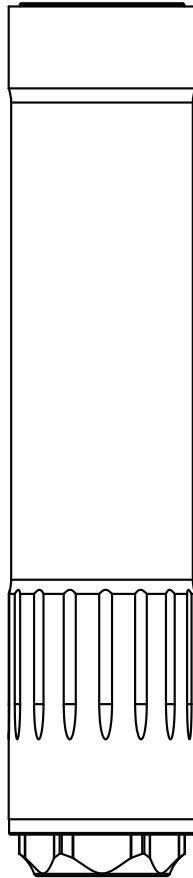




# KGM

## SUPPRESSORS

### User Manual For KGM RF22 Suppressor



RF22

- Safety Precautions ..... 2
- Specifications ..... 3
- Suppressor Nomenclature ..... 3
- Attaching Direct Thread Suppressor ..... 4
- Removing Direct Thread Suppressor ..... 5
- Suppressor & Bore Alignment ..... 6
- Disassembly of RF22 Suppressor ..... 7
- RF22 Internal Components ..... 8
- Reassembly of RF22 Suppressor ..... 9
- Suppressor Maintenance ..... 10
- Limited Lifetime Warranty ..... 11

Length	5.2" (132mm)
Diameter	1.2" (30.5mm)
Weight (w/o mount)	5 oz (142g)
Caliber/Bore	.22
Construction	Titanium/Steel/Aluminum
User Serviceable	Yes
Cartridge Rating	Up to 5.7x28mm
Muzzle Attachment	1/2x28 Direct Thread



## Safety Precautions

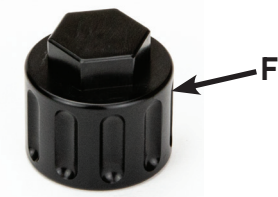
### Safety Precautions

- Ensure the host firearm is UNLOADED before mounting or removing the suppressor, cleaning, storage, or shipping
- Wear proper eye protection when firing or cleaning the suppressor or host firearm.
- Depending on the host firearm, ammunition combination, and environmental conditions, firing may produce sound levels above recommended ear safety thresholds. Always wear hearing protection to prevent hearing damage.
- Suppressors are user-attached to firearm muzzles; it is crucial to follow proper mounting procedures. An improperly mounted suppressor can cause bodily harm, suppressor damage, or damage to the host firearm.
- For suppressors with muzzle device mounts, check for proper muzzle device fit before mounting. The mount must fully contact the barrel's shoulder, with no visible gap.
- When mounting the suppressor, ensure it is fully seated and tightened on the muzzle brake.
- Ensure the suppressor internals and bore remain free of obstructions such as dirt, mud, or other foreign debris. NEVER attempt to fire with an obstructed bore, as it may cause bodily harm, suppressor damage, or damage to the host firearm.

## Suppressor Nomenclature



Suppressor	
A	Front Cap
B	Suppressor Bore
C	Grasping Grooves
D	Wrench Flats
E	Rear Mount with Attachment Threads
F	Assembly/Disassembly Tool



## Attaching Direct Thread Suppressor

### WARNING!

Ensure the host firearm is UNLOADED before attaching suppressor.

1. Align the bottom of the suppressor with the muzzle threads.
2. Screw-on the suppressor in a clockwise direction until it completely stops.



3. Firmly grasp the suppressor and host firearm, and firmly attempt to rotate further to ensure secure attachment. Verify the suppressor is firmly seated for safe and proper function.
4. For best results, utilize 7/8" wrench or strap wrench for extra force to ensure suppressor is securely attached to muzzle.

## Removing Direct Thread Suppressor

### WARNING!

Ensure the host firearm is UNLOADED before removing suppressor.

If suppressor is hot, wait for it to cool before attempting to remove.

1. Grasp suppressor at the grasping grooves and hold onto the host firearm.
2. Un-screw the suppressor in a counter-clockwise direction.



3. Once the suppressor is free of the muzzle threads, slide the suppressor off of the muzzle.

NOTE: After extensive firing, carbon buildup can make the suppressor hard to remove. Use a 7/8" wrench on the rear mount to get additional leverage for removal.

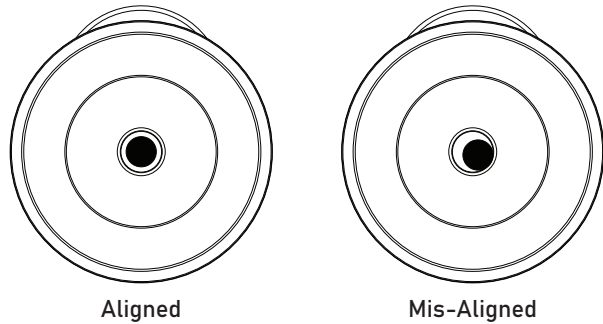


## Suppressor & Bore Alignment

Before firing your suppressor for the first time on a host firearm, use a suppressor bore alignment rod to verify total system alignment. Ensure a proper fitting rod is used for accurate verification, considering potential variances in barrel dimensions and rod specifications.

If misalignment is detected, please promptly contact Customer Support.

### REMOVE BORE ALIGNMENT ROD BEFORE FIRING!



## Disassembly of RF22 Suppressor

### WARNING!

Remove the RF22 from host firearm before disassembly.

1. Grasp the suppressor and insert male end of the RF22 Assembly/Disassembly tool into the front cap. Use the tool to unscrew counter-clockwise until the front cap is removed from the suppressor.



2. The baffles may freely fall out, or if heavily fouled may stay in place.
3. To remove the rear mount, attach the female end of the tool to the rear mount and unscrew counter-clockwise.



4. If the baffles do not freely fall out, insert a wood or delrin rod from the back end. A gentle push will push the baffles out (beware of baffles separating and falling free as they come out of the tube).

# RF22 Suppressor Internal Parts



A	Body Tube (Titanium)
B	Disassembly/Reassembly Tool (Aluminum)
C	Front Cap (Aluminum)
D	Baffles (Aluminum)
E	Blast Baffle (Steel)
F	Rear Mount (Titanium)



# Reassembly of RF22 Suppressor

1. Attach the rear mount to the rear of the suppressor, tightening clockwise. Use the tool to tighten until snug.



2. The baffle stack components may be inserted individually, or pre-stacked and inserted together. The blast baffle is closest to the rear mount, and must be oriented as indicated by the engraving, with the arrow facing the muzzle direction.
3. The baffles have been designed where they do NOT need to be indexed or kept in the same sequence during reassembly. Simply stack the baffles together and insert with the cone end facing the rear of the suppressor.



4. Attach the front cap to the suppressor, tightening with the tool until snug.

NOTE: The end cap may not fit flush with the end of the tube when the suppressor is new or has a low round-count. This is a design feature to ensure a tight stack fitment, even as the baffles compress slightly from wear.





### Firing Schedules & Service Life

KGM Suppressors are engineered for a long service life. However, regular firing will cause accumulation of carbon, powder, lead and/or copper residue..

A good practice is to weigh your suppressor when new, and denote that initial weight. Then periodically weigh it during host firearm maintenance to measure fouling. .

### Regular Maintenance

The RF22 was designed to be disassembled by the end-user for routine maintenance. KGM recommends basic cleaning every 150-200 rounds depending on the host firearm and ammunition.

Follow removal and disassembly procedures outlined in this manual. Wipe down all surfaces, and use a nylon brush to eliminate carbon and copper fouling from accessible surfaces. If using chemicals, ensure they are not corrosive to aluminum. Wipe clean or rinse with water and dry.

### Heavy Cleaning

Perform a more thorough cleaning cycle for the suppressor after one thousand rounds (1,000), on an annual basis, or as necessary due to fouling or loss of effectiveness.

- Disassemble the suppressor.
- Place the suppressor parts in a chemically resistant container.
- Using an aluminum-friendly suppressor cleaning chemical, fill the container until the suppressor parts are submerged.

NOTE 1: Certain cleaning solutions or chemicals may cause color discoloration.

NOTE 2: Ultrasonic cleaners are a viable cleaning option, however discoloration or scratching may occur.

- Remove the suppressor parts from the container and/or correctly dispose of cleaning chemicals.
- Rinse the suppressor with water.
- Brush any accessible carbon buildup and rinse with water again.
- Use compressed air to dry suppressor internals.
- Reassemble suppressor.

### Warranty Statement

KGM provides a limited lifetime warranty for our suppressors and suppressor-related accessories. We will repair or replace any KGM product that is deemed to have manufacturing, material, or workmanship defects if determined by KGM to be defective.

KGM does not warranty normal wear and tear, use of non-standard (SAAMI/NATO) ammunition, unauthorized modifications, alterations, or repairs, improper maintenance, abuse, misuse, improper mounting, or neglect. Repairs not covered under warranty will be at owner's expense, with the owner given approval authority before commencing repair work. Any serial number obliteration or alteration will void the warranty.

KGM will attempt to repair discontinued models subject to parts availability, or a comparable, currently produced model may be offered as a replacement.

This warranty gives you specific legal rights, and you may also have other rights which vary from state to state. Some states do not allow the exclusion or limitation of incidental or consequential damages, so the above limitations or exclusions may not apply to you.

### Warranty Claims

For repair or replacement, email Customer Service at [info@kgm-tech.com](mailto:info@kgm-tech.com), or call at 770-769-1495, to obtain a Return Merchandise Authorization (RMA) number and instructions. Additionally, an RMA request can also be submitted through the website at [www.kgm-tech.com](http://www.kgm-tech.com). You will be supplied with additional shipping instructions specific to the product being returned.



[kgm-tech.com](http://kgm-tech.com)



[info@kgm-tech.com](mailto:info@kgm-tech.com)



(770) 769-1495



4900 Avalon Ridge Parkway  
Peachtree Corners, GA 30071



#KGMsuppressors